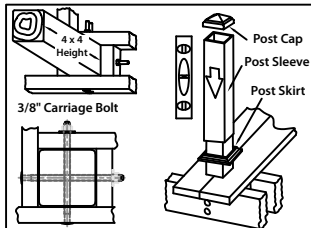
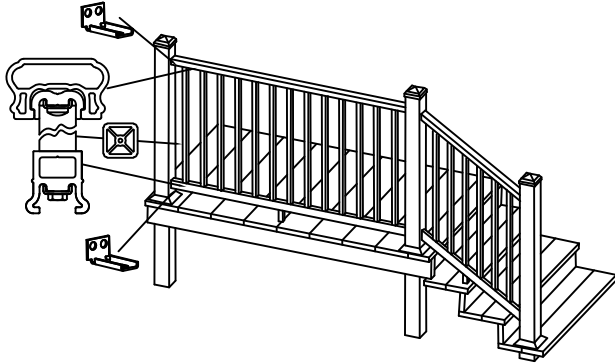


COMPOSITE RAILING LEVEL INSTALLATION GUIDE

LANDMARKE

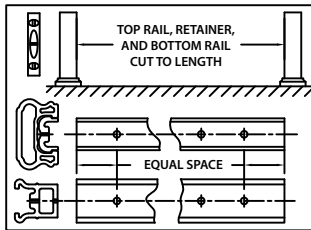
BY FAIRWAY.

I It is the responsibility of the installer to meet or exceed all code and safety requirements, and to obtain all required building permits. These instructions are only a guide and may not address every circumstance. The installer should determine and implement appropriate installation techniques for each situation. **FAIRWAY Vinyl Systems shall not be held liable for improper or unsafe installations.**



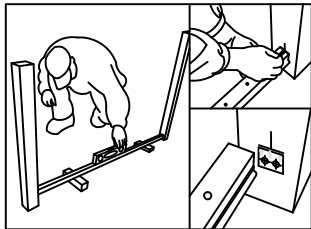
1. Mount Post Sleeve

- Install 4" x 4" wood posts extending 42" or 36" above deck surface
- Slide post sleeves over 4" x 4" wood posts, level and plumb
- Slide post trim in place



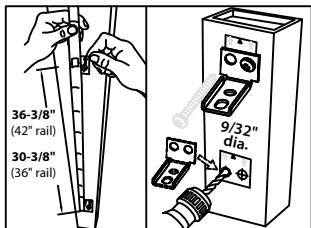
2. Cut Railing Components

- Measure distance between posts
- If required, cut both ends of bottom rail and retainer to fit EQUAL baluster distance between posts. ENSURE THE PRE-DRILLED HOLES ON BOTTOM RETAINER MATCH
- Leave at least 2 3/4" equal space on both ends for L-Bracket installation



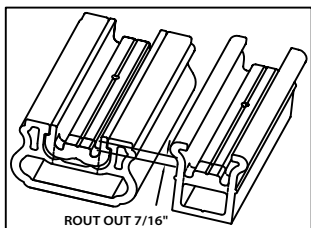
3. Level Bottom Rail

- Level bottom rail between the posts at required height per local code
- Mark the top edge of bottom rail and center of the post
- Adhere a label along the mark as per instruction on the label



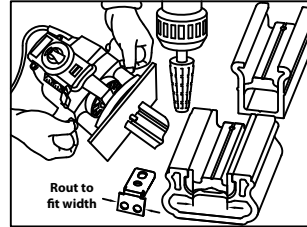
4. Mount Post L-Brackets

- Adhere a second label on the post (36-3/8" for 42" rail or 30-3/8" for 36" rail) above the bottom label.
- Drill 9/32" dia. holes through POST SLEEVE ONLY
- Fasten L-Brackets on post using 2" pan head lag screws



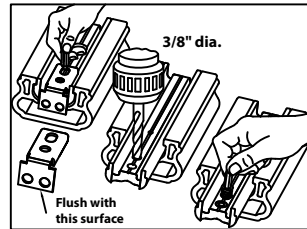
5. Mark for Routing if Required

- Rails and retainer are supplied with ends routed. If ends require cutting, all three parts need to be re-routed.
- Mark ROUT OUT line 7/16" from both ends on the parts cut in step 2 as shown
- If no cutting is required, skip to step 7



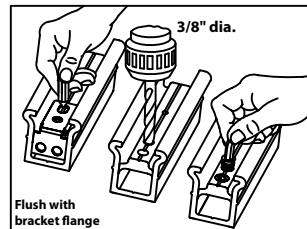
6. Rout Rail Components (if determined necessary in step 5)

- Rout out both ends of top rail, retainer, and bottom rail the width to fit L-Bracket flange and the depth to ROUT OUT marks using a router or a rasp
- ROUT OUT ONLY MIDDLE SECTION ON RAILS AND RETAINER AS SHOWN IN THE PICTURE



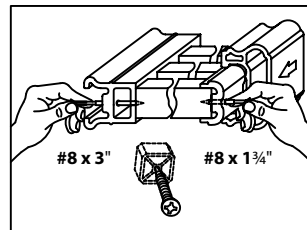
7. Prepare Retainer

- Position L-Bracket as shown, flush flange with both ends and mark for L-Bracket hole locations
- Drill a 3/8" dia. hole through retainer
- Screw in threaded metal inserts using supplied Hex wrench



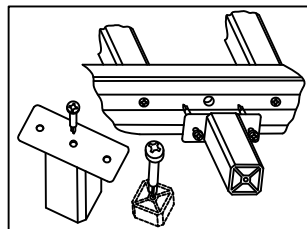
8. Prepare Bottom Rail

- Flush L-Bracket flange with both ends and mark for L-Bracket hole locations
- Drill a 3/8" dia. hole through BOTTOM RAIL MIDDLE SECTION ONLY
- Screw in threaded metal inserts using supplied Hex wrench



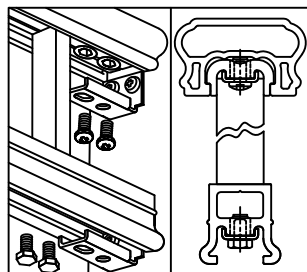
9. Assemble Rail Section

- Place balusters between retainer and bottom rail, then align holes
- Fasten retainer to balusters using #8 x 1 3/4" wood screws into baluster center screw chase
- Connect bottom rail to balusters using #8 x 3" wood screws
- Slide top rail over the retainer
- Install 1 1/4" wood screws up through retainer to secure top rail



10. Install Center Support

- Trim center support baluster to ensure level support
- Fasten plate to end of support using self-tapping wood screw
- Counter-bore bottom rail for screw head protruding from plate
- Install the support under bottom rail with self-tapping wood screws



11. Finish Installation

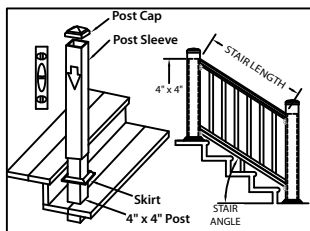
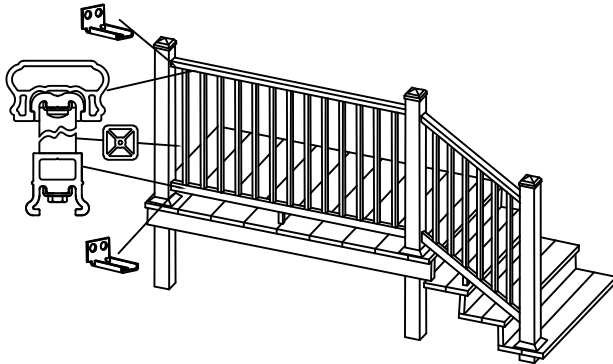
- Fasten the railing section to post L-Brackets using 1/4" pan head screws for top rail and 1/4" Hex head screws for bottom rail
- Install post caps using silicone sealant
- Apply silicone sealant on all seams

COMPOSITE RAILING STAIR INSTALLATION GUIDE

LANDMARKE

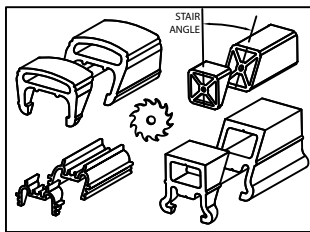
BY FAIRWAY.

! It is the responsibility of the installer to meet or exceed all code and safety requirements, and to obtain all required building permits. These instructions are only a guide and may not address every circumstance. The installer should determine and implement appropriate installation techniques for each situation. **FAIRWAY Vinyl Systems shall not be held liable for improper or unsafe installations.**



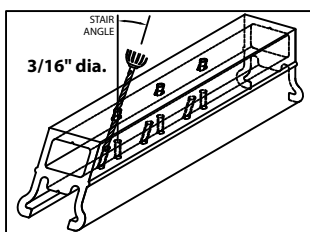
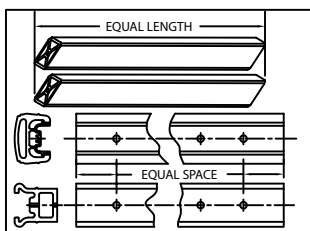
1. Mount Post Sleeve

- Install 4" x 4" wood posts extending 42" or 36" above deck surface
- Slide post sleeves over 4" x 4" wood posts, level and plumb
- Slide post trim in place
- Measure stair angle and stair length as shown
- Plan for center support



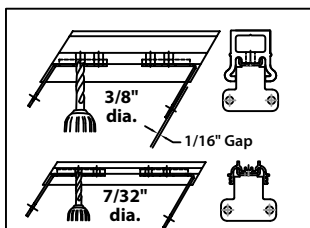
2. Cut Railing Components

- Cut a minimum at both ends of balusters to stair angle, ensuring uniform baluster length
- Cut rails and retainer equally on both ends to stair length and angle
- Leave at least 2 3/4" of equal space on both ends for L-Bracket installation
- ENSURE ALL COMPONENTS ARE EQUAL LENGTH AND PRE-DRILLED HOLES ON RAILS MATCH



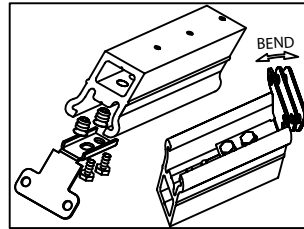
3. Angle Drill Bottom Rail

- Drill 3/16" dia. holes through bottom rail from top, aligning the drill through pre-drilled holes at stair angle
- Tip: Use a piece of baluster end cut scrap as a drilling guide



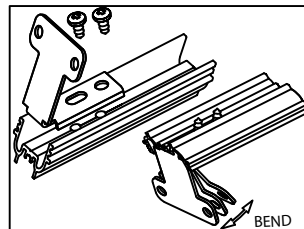
4. Drill L-Bracket Holes

- Align angled L-Bracket to both ends of retainer and bottom rail, inset 1/16", mark for the hole locations
- Drill 3/8" dia. hole through bottom rail
- Drill 7/32" dia. hole through retainer



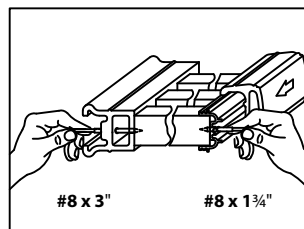
5. Mount Bottom Rail L-Bracket

- Use supplied Hex wrench to install threaded metal insert into 3/8" dia. holes
- Fasten L-Bracket using Hex head machine screws
- Bend L-Bracket to match the angle of rail if required



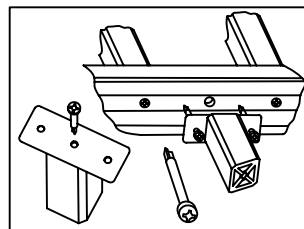
6. Mount Retainer L-Bracket

- Fasten L-Bracket using self-tapping screws
- Bend L-Bracket to match the angle of rail if required



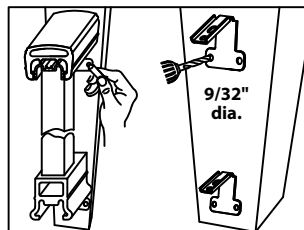
7. Assemble Rail Section

- Place balusters between retainer and bottom rail, then align holes
- Fasten retainer to balusters using #8 x 1 3/4" wood screws
- Connect bottom rail to balusters using #8 x 3" wood screws
- Slide top rail over the retainer
- Install 1 1/4" wood screws up through retainer to secure top rail



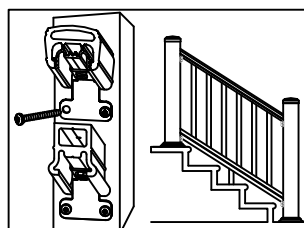
8. Install Center Support

- Angle cut support baluster to proper length
- Fasten plate to end of the support using self-tapping wood screw
- Counter-bore bottom rail for screw head protruding from plate
- Install the support under bottom rail with self-tapping wood screws



9. Drill Post L-Bracket Holes

- Position assembled stair rail section between the posts at the height required by your local building code
- Mark post for L-Bracket flange holes
- Drill 9/32" dia. holes through POST SLEEVE ONLY



10. Finish Installation

- Fasten the railing section L-Brackets to posts using 2" lag bolts
- Install post caps using silicone sealant
- Apply silicone sealant on all seams